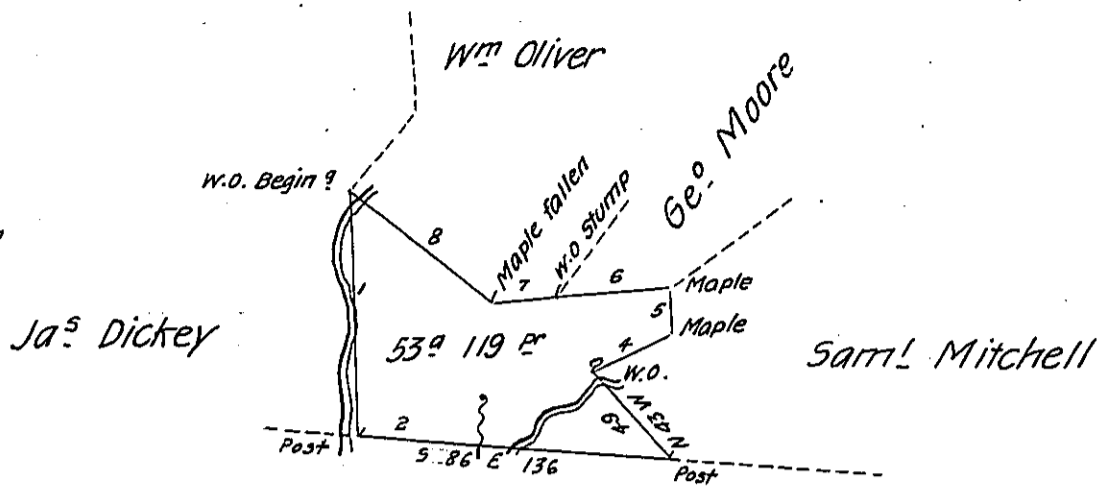


- Begin W.O.  
 Course & Distance  
 1 S 2 E 102 Post  
 2 S 86 E 136 Post  
 3 N 43 W 49 W.O.  
 4 N 67 E 37 Maple  
 5 North 18 3/4 Maple  
 6 West 51 1/2 W.O. Stump  
 7 S 83 W 26 Maple fallen  
 8 N 54 W 77 1/2 W.O. }  
 The Place of Beginning }



Geo. Moore in right of  
 J. Kearsley

*Draught of a Tract of Land situate in Fermanagh Township  
 Mifflin County containing Fifty three acres and 119 Perches & the allow-  
 ance of Six Per Cent for roads &c appears survey<sup>d</sup> (by James Harris  
 late D.S.) Nov<sup>r</sup> 23<sup>d</sup> 1793 In pursuance of a Warrant granted to George  
 Moore the 24<sup>th</sup> day of April 1793*

*Examined March the 4<sup>th</sup> 1803*

*Pr*

*William Harris D.S.*

*To Samuel Cochran Esquire  
 Surv<sup>r</sup> Gen<sup>l</sup> Pennsylvania*

IN TESTIMONY that the above is a copy of the original remaining on file in the Department of Internal Affairs of Pennsylvania, made conformably to an Act of Assembly approved the 16th day of February, 1833, I have hereunto set my Hand and caused the Seal of said Department to be affixed at Harrisburg, this eighth day of February 1906

*Isaac R. Brown*  
 Secretary of Internal Affairs.